



FRONT ROW & CO

EST. 1991

2024

FRONT ROW & CO

EST. 1991

THIS IS FRONT ROW & CO.

GREAT LOOKING LEISUREWEAR.
THOUGHTFULLY CREATED
THROUGH EXPERIENCE.

— TAG FREE —

ALL STYLES ARE TAG FREE,
DESIGNED FOR RE-BRANDING.

RUGBIES	4
TEES & POLOS	8
WOVENS & JACKETS	10
TECHNICAL INFO	13
PRODUCT GUIDE	15

FR007 / FR606 / FR001 / FR605

RUGBIES

Panelled
1/4 ZIP
FR006

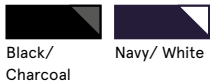


Panelled
RUGBY SHIRT
FR007



100% Ring Spun Cotton,
300gsm Heavyweight Single Jersey

FR006 Sizes: XS-2XL



100% Ring Spun Cotton,
300gsm Heavyweight Single Jersey

FR007 Sizes: S-2XL



Men's / Ladies' / Kids'
Long Sleeved Plain
RUGBY SHIRTS
FR100 | FR101 | FR109

100% Ring Spun Cotton,
270gsm Single Jersey

FR100 Sizes: XS-5XL*
FR101 Sizes: XS-4XL
FR109 Sizes: 5/6-11/13yrs



FR101 only available in Black/White
and Navy/White.
FR109 only available in Navy/White
and Red/White.

*FR100 XS, 4XL & 5XL only
available in Black/White, Navy/
White and Red/White.



Long/ Short Sleeved Original
RUGBY SHIRT
FR001 | FR003



100% Ring Spun Cotton,
300gsm Heavyweight Single Jersey

FR001 Sizes: S-3XL*



*3XL not available in Bottle/White

100% Ring Spun Cotton,
300gsm Heavyweight Single Jersey

FR003 Sizes: S-2XL

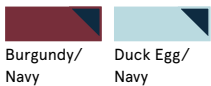


Striped
RUGBY SHIRT
FR008



100% Ring Spun Cotton,
300gsm Heavyweight Single Jersey

FR008 Sizes: S-2XL



FR043



FR040

Supersoft Long Sleeved
RUGBY SHIRT

FR043

100% Combed Cotton,
260gsm Heavily Brushed Single Jersey

FR043 Sizes: S-2XL



Supersoft 1/4 Zip
SWEATSHIRT

FR040

80% Cotton, 20% Polyester,
280gsm Brushed Back Fleece

FR040 Sizes: S-2XL



Premium Superfit
RUGBY SHIRT

FR104

100% Cotton,
300gsm Heavyweight Single Jersey
Peach Finish

FR104 Sizes: XS-3XL



TEES & POLOS



Long / Short Sleeved Striped Breton T-SHIRTS

FR134 | FR135
100% Cotton,
180gsm Single Jersey

FR134/FR135 Sizes: XS-2XL



Navy/ White White/ Navy



Striped T-SHIRT

FR136
100% Cotton,
180gsm Single Jersey

FR136 Sizes: XS-2XL



Black/ Khaki Navy/ Marine White/Duck Egg

Contrast Pique POLO SHIRT

FR 200
100% Cotton,
200gsm Pique

FR200 Sizes: S-2XL



Navy/ Marine



Striped Jersey POLO SHIRT

FR 230
100% Cotton,
180gsm Single Jersey

FR230 Sizes: XS-2XL



Navy/ White White/ Navy



WOVENS



10

Men's / Ladies' Stretch CHINOS

FR 621 | FR 622

Men's / Ladies' Stretch CHINO SHORTS

FR 605 | FR 606



97% Cotton, 3% Elastane
220gsm Stretch Twill, Garment Washed

FR605/FR621 Sizes: 28" - 40" (FR621 Reg 32" + Long 34")

FR606/FR622 Sizes: XS-2XL (FR622 Reg 32")



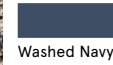
Front Row Collection

Pullover DRILL SHIRT

FR 050

100% Cotton,
265gsm Drill, Garment Washed

FR050 Sizes: XS-3XL



Washed Navy



Drill OVERSHIRT

FR 054

100% Cotton,
265gsm Drill, Garment Washed

FR054 Sizes: XS-3XL

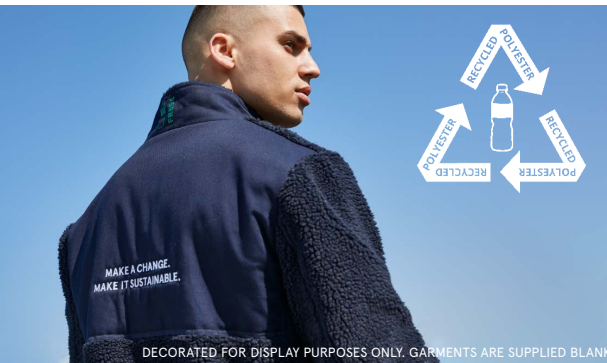


Black

Navy

Khaki

11



TO FIT GUIDE

IT IS ADVISED TO USE ACTUAL BODY MEASUREMENTS RATHER THAN MEASURING OVER CLOTHING

MEN'S GARMENTS

TOPS & OUTERWEAR EXCLUDING FR104/FR500	2XS	XS	S	M	L	XL	2XL	3XL	4XL	5XL
EUR - Chest - To Fit	42-44	44-46	46-48	48-50	52	54-56	58	60-62	62-64	64-66
Chest - To Fit - Inches	32-34	34-36	36-38	38-40	42	44-46	48	50-52	52-54	54-56
Chest - To Fit - CMs	81-86	86-91	91-96	96-101	107	112-117	122	127-132	132-137	137-142
EXCEPTIONS - FR104/FR500	XS	S	M	L	XL	2XL	3XL			
FR104 - EUR - Chest - To Fit	44-46	46-48	48-50	52	54-56	56-58	58-60			
FR104 - Chest - To Fit - Inches	34-36	36-38	38-40	42	44-46	46-48	48-50			
FR104 - Chest - To Fit - CMs	86-91	91-96	96-101	107	112-117	117-122	122-127			
FR500 & FR501 - EUR - Chest - To Fit	46-48	48-50	52	54-56	56-58	58-60				
FR500 & FR501 - Chest - To Fit - Inches	36-38	38-40	40-42	42-44	44-46					
FR500 & FR501 - Chest - To Fit - CMs	91-96	96-101	101-107	107-112	112-117					

TROUSERS & SHORTS	2XS	XS	S	M	L	XL	2XL			
UK - Waist - To Fit - Inches	28	30	32	34	36	38	40			
EUR - Waist - To Fit	38	40	42	44	46	48	50			
Waist - To Fit - CMs	71	76	81	86	91	96	101			
Regular Inside Leg Length - Inches	32	32	32	32	32	32	32			
Long Inside Leg Length - Inches	34	34	34	34	34	34	34			

LADIES' GARMENTS

TOPS & OUTERWEAR	XS	S	M	L	XL	2XL	3XL	4XL
UK - To Fit	8	10	12	14	16	18	20	22
EUR - To Fit	36	38	40	42	44	46	48	50
Chest - To Fit - Inches	30-32	32-34	34-36	36-38	38-40	40-42	42-44	44-46
Chest - To Fit - CMs	78-81	81-86	86-91	91-96	96-101	101-107	107-112	112-117

TROUSERS & SHORTS	XS	S	M	L	XL	2XL
UK - To Fit	8	10	12	14	16	18
EUR - To Fit	36	38	40	42	44	46
Waist - To Fit - Inches	26	28	30	32	34	36
Waist - To Fit - CMs	66	71	76	81	86	91
Inside Leg Length - Regular Inches	32	32	32	32	32	32

KIDS' GARMENTS

TOPS - AGE	5/6	7/8	9/10	11/13
Height - CMs*	116	128	140	158
Chest - To Fit - Inches	24-26	26-28	28-30	30-32
Chest - To Fit - CMs	60-66	66-71	71-76	76-81

*Please note that height is a better indication of fit than age.

NEED ACTUAL GARMENT MEASUREMENTS?

A summary of our garment size specs can be found on our website: www.frontrowclothing.co.uk

Recycled Sherpa FLEECE

FR854

100% Recycled Polyester, 300gsm Sherpa Fleece
65% Polyester, 35% Cotton Twill Panelling

FR854 Sizes: XS-2XL



Black Navy

- EMBROIDERY ACCESS -



Pullover 1/2 Zip JACKET

FR905

100% Polyester,
150gsm Poplin T400, Water Resistant Finish

FR905 Sizes: XS-2XL



Black Navy

- EMBROIDERY ACCESS -

Get In Touch

If you want to find out more about the Front Row range or if you would like us to visit you or arrange a meeting with our brand representative, get in touch because we love to chat. It's great to get your feedback too, so don't be shy!

Email: enquiries@frontrowclothing.co.uk
Web: frontrowclothing.co.uk

For more great quality and style, check out the full range of brands at henburybrands.com

HENBURYBRANDS

Be Social

Follow us on Twitter, Facebook and Instagram for the latest Front Row news and updates.



frontrowandcooclothing frontrowandcooclothing Henbury Brands

Image Cloud

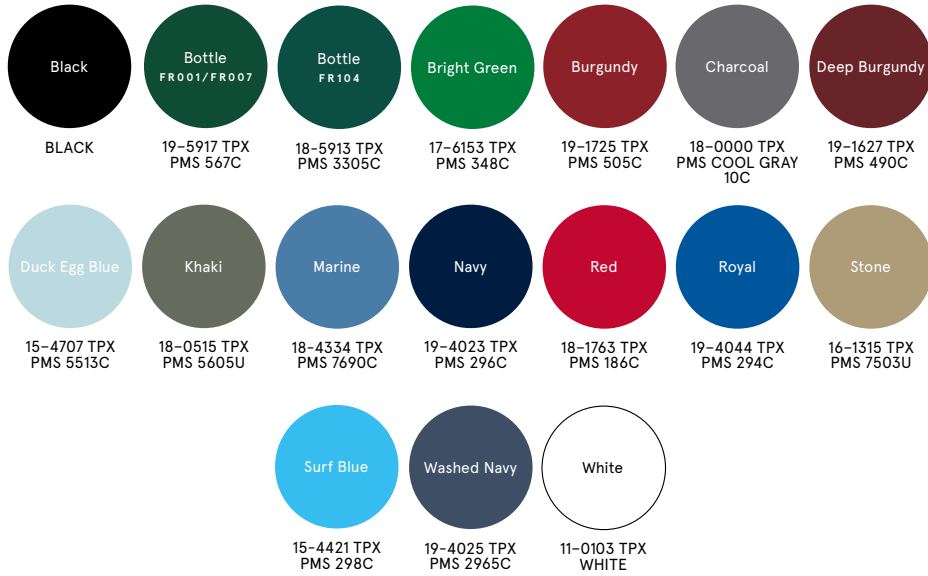
Download all our logos, torso shots and lifestyle photography via our Cloud on:

cloud.henbury.com



PANTONES

ALL SHADES HAVE NEAREST PANTONE REF LISTED, ACTUAL SHADES MAY VARY.



14

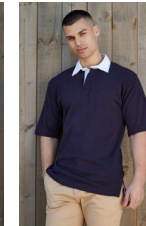
FR008/FR104



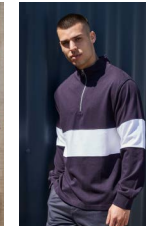
PRODUCT GUIDE



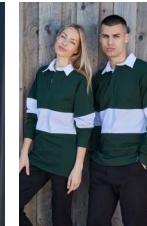
FR001 | Page 6
L/S Original
Rugby Shirt



FR003 | Page 6
S/S Original
Rugby Shirt



FR006 | Page 4
Panelled 1/4 Zip



FR007 | Page 4
Panelled Rugby
Shirt



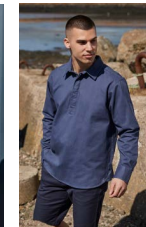
FR008 | Page 6
Striped Rugby
Shirt



FR040 | Page 7
Supersoft 1/4
Zip Sweatshirt



FR043 | Page 7
Supersoft L/S
Rugby Shirt



FR050 | Page 11
Pullover Drill
Shirt



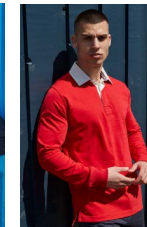
FR054 | Page 11
Drill Overshirt



FR100 | Page 5
Men's L/S Plain
Rugby Shirt



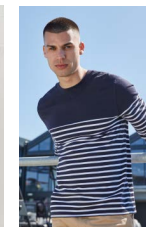
FR101 | Page 5
Ladies' L/S Plain
Rugby Shirt



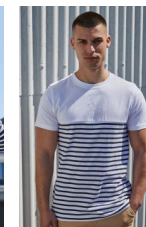
FR104 | Page 7
Men's Premium
Superfit Rugby
Shirt



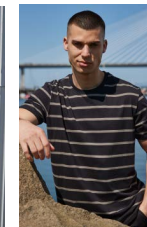
FR109 | Page 5
Kids' L/S Plain
Rugby Shirt



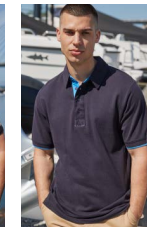
FR134 | Page 8
L/S Breton
Striped T-Shirt



FR135 | Page 8
S/S Breton
Striped T-Shirt



FR136 | Page 8
Striped T



FR200 | Page 9
Men's Contrast
Pique Polo Shirt



FR230 | Page 9
Striped Jersey
Polo Shirt



FR605 | Page 10
Men's Stretch
Chino Shorts



FR606 | Page 10
Ladies' Stretch
Chino Shorts



FR621 | Page 10
Men's Stretch
Chinos



FR622 | Page 10
Ladies' Stretch
Chinos



FR854 | Page 12
Recycled Sherpa
Fleece



FR905 | Page 12
Pullover 1/2 Zip
Jacket



frontrowandcoclothing



Henburybrands



Front: FR104
Back: FR854

